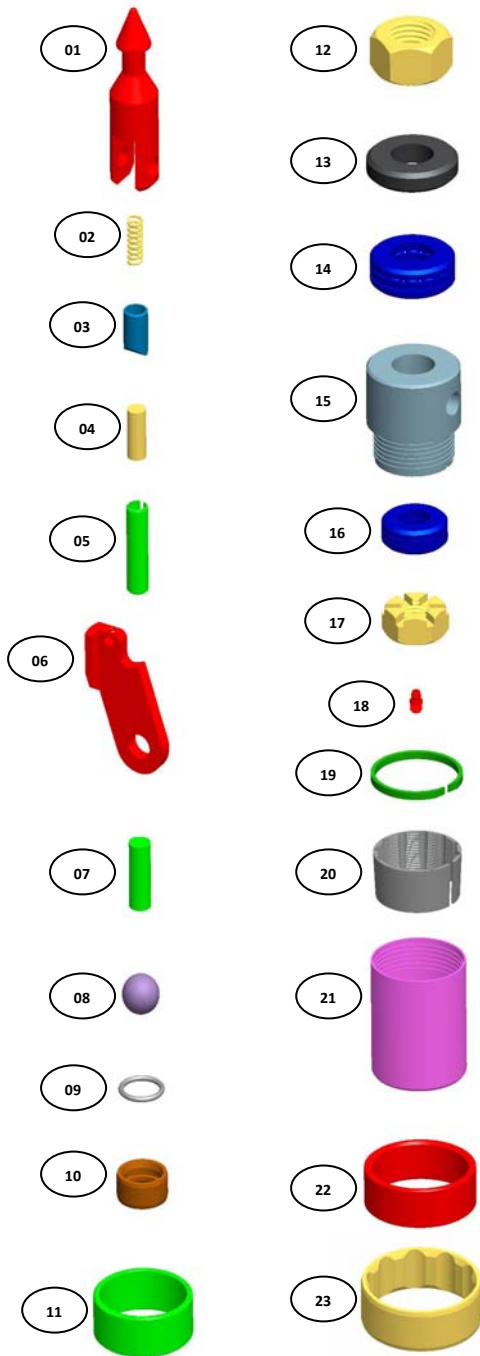


**NWL-LI CORE BARREL SPARE PARTS KIT**



|             | ITEM DESCRIPTION                         | PART NUMBERS     |
|-------------|--|------------------|
| <b>1-23</b> | <b>NK-WL CORE BARREL SPARE PARTS KIT</b> | <b>16-00-140</b> |
| <b>1</b>    | <b>SPEARHEAD POINT</b>                   | <b>16-03-001</b> |
| <b>2</b>    | <b>COMPRESSION SPRING</b>                | <b>16-03-002</b> |
| <b>3</b>    | <b>DETENT PLUNGER</b>                    | <b>16-03-003</b> |
| <b>4</b>    | <b>SOLID DOWELL 7/16" x 1"</b>           | <b>16-03-005</b> |
| <b>5</b>    | <b>SPRING DOWELL 1/2" x 2" - 2 NOS.</b>  | <b>16-03-007</b> |
| <b>6</b>    | <b>NK-WL LATCH - 2 NOS.</b>              | <b>16-03-009</b> |
| <b>7</b>    | <b>SOLID DOWELL 1/2" x 1 1/2"</b>        | <b>16-03-010</b> |
| <b>8</b>    | <b>STAINLESS STEEL BALL 22 mm</b>        | <b>16-03-014</b> |
| <b>9</b>    | <b>LANDING INDICATOR BUSH O RING</b>     | <b>16-03-016</b> |
| <b>10</b>   | <b>LANDING INDICATOR BUSH</b>            | <b>16-03-015</b> |
| <b>11</b>   | <b>LANDING SHOULDER</b>                  | <b>16-03-012</b> |
| <b>12</b>   | <b>ADJUSTING HEX NUT</b>                 | <b>16-03-017</b> |
| <b>13</b>   | <b>SHUT OFF VALVE - 2 NOS.</b>           | <b>16-03-019</b> |
| <b>14</b>   | <b>THRUST BEARING</b>                    | <b>16-03-021</b> |
| <b>15</b>   | <b>BEARING SPINDLE</b>                   | <b>16-03-023</b> |
| <b>16</b>   | <b>THRUST BEARING</b>                    | <b>16-03-025</b> |
| <b>17</b>   | <b>NYLOCK NUT , 3/4" UNC</b>             | <b>16-03-027</b> |
| <b>18</b>   | <b>GREASE FITTING</b>                    | <b>16-03-024</b> |
| <b>19</b>   | <b>RING STOP</b>                         | <b>16-03-031</b> |
| <b>20</b>   | <b>CORE LIFTER</b>                       | <b>16-03-032</b> |
| <b>21</b>   | <b>CORE LIFTER CASE</b>                  | <b>16-03-033</b> |
| <b>22</b>   | <b>RING LANDING</b>                      | <b>16-02-003</b> |
| <b>23</b>   | <b>STABILIZER RING</b>                   | <b>16-02-006</b> |